

# MISHIMA

Salvage/Multipurpose Work Barge



## PARTICULARS OF “MISHIMA”

When built/Flag	April 2008/Japan
Gross tonnage	1,408 tons
Dead weight	2,924 tons
Length × Breadth × Depth	60.0m × 24.0m × 4.0m

## INSTALLATIONS

Generator	Denyo (soundproof type) 300kVA × 440V × 394A × 60Hz × 2
Deck machinery	Single drum winch (rating: 20/6.7 tons × 11/33m/min, brake force 60 tons) × 2 Side by side double drum winch (rating: 20/6.7 tons × 11/33m/min, brake force 60 tons) × 2
Accommodation	31 berths
Moring System	6 points
Thrusters	SCHOTTEL SPJ57 Pump-jet × 2
Tank	Oil Storage Tank 707.4 m <sup>3</sup> , fresh water tank 378 m <sup>3</sup> , fuel tank 140 m <sup>3</sup>
Special Equipment	Chain puller (pulling power: 300 tons) × 2 Anchor 4.2 tons (AC-14)/38 mm dia. × 600 m steel wire rope × 6

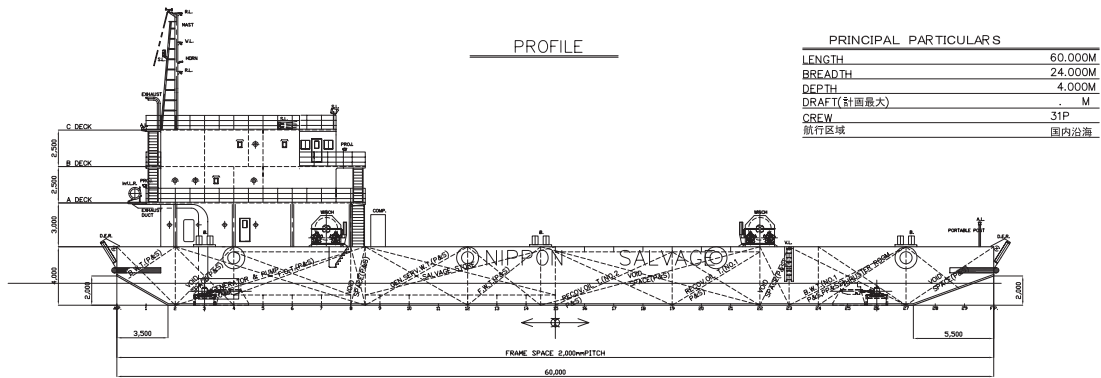
※All details are believed to be correct but not guaranteed.



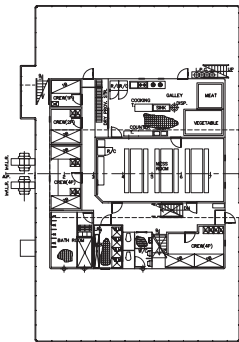
The Nippon Salvage Co., Ltd.

# Salvage / Multipurpose Work Barge

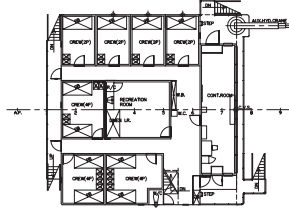
## MISHIMA (海島)



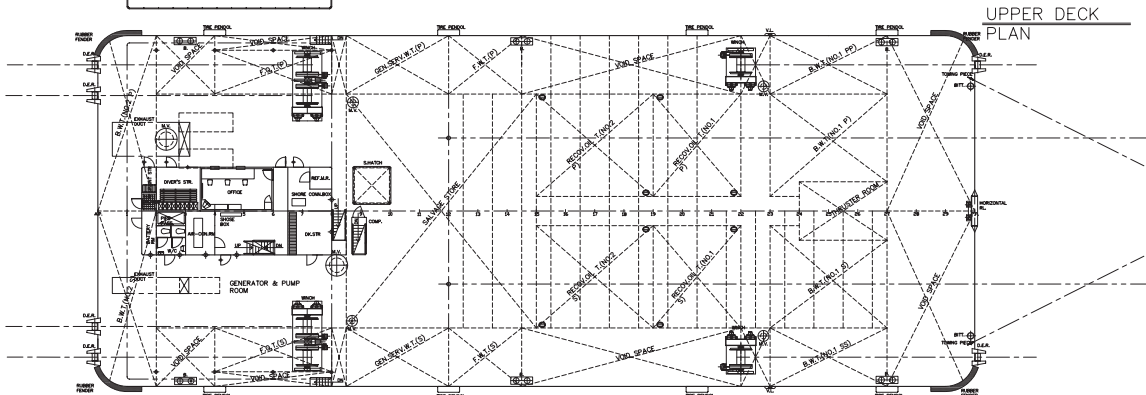
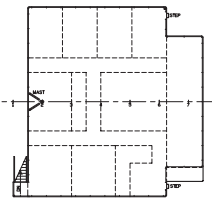
A DECK PLAN



B DECK PLAN



C DECK PLAN



BOTTOM PLAN

