

MASAKUNI

Salvage/Multipurpose Work Barge



PARTICULARS OF “MASAKUNI”

Classification	NK
When built/Flag	June 2005/Japan
Registered gross tonnage	2,199 tons
Length× Breadth × Depth	60.0m × 24.0m × 4.5m

INSTALLATIONS

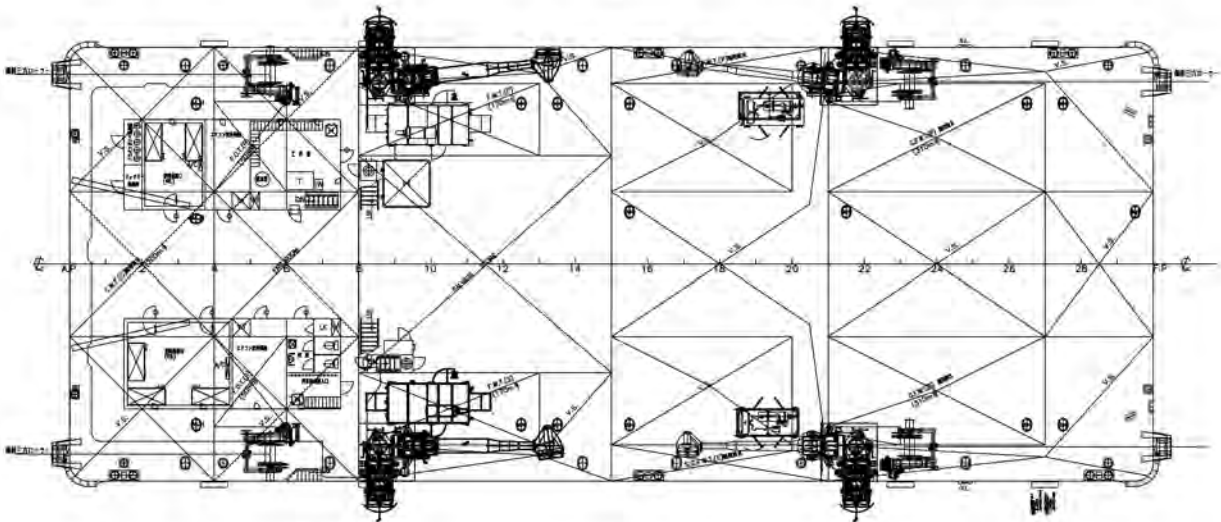
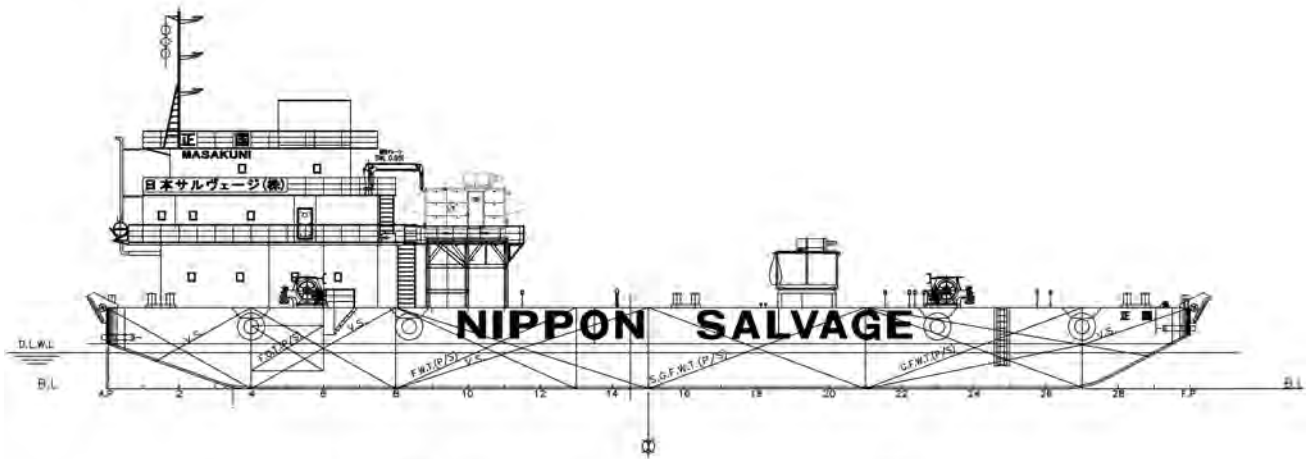
Deck machinery	4 × mooring winch : 15-ton capacity single drum winch, 4 × 3 ton anchor
Accommodation	50 berths
Positioning System	Dynamic Positioning System Kongsberg Maritime K-POS-21 (Dual System)

※All details are believed to be correct but not guaranteed.



The Nippon Salvage Co., Ltd.

Salvage/Multipurpose Work Barge **MASAKUNI (正国)**



2F SEC

3F SEC

